

ENBRIDGE'S LEAKY PIPES

Enbridge Greatest Hits

July 25, 2010, Line 6B spills dilbit for 17 hours into the Kalamazoo River near Marshall, Mich.

Feb. 16, 2012, Sterling, Mich, Enbridge Line 5 spill. Crews detected the leak in the pipeline by observing oil in the soil.

July 27, 2012, Grand Marsh, Wis.: Enbridge Line 14 breaks spilling 50,000 gallons of oil. The DNR says 45,000 tons of soil will be removed, treated and end up in a landfill.

Jan. 1, 2007, Atwood, Wis.: 63,000 gallons leaked onto farm ground and a drainage ditch from Enbridge Line 14 that inexplicably cracked.

March 3, 2012, New Lenox, IL: Two vehicles crashed into Enbridge Line 14/64 causing an explosion and fireball. Three killed including a firefighter.

Sept 9, 2010, Romeoville, IL: 270,000 gallons spill into the streets from Line 6A. A lawsuit remains unsettled in August of 2016.

August 11, 2015 Shelbina, Missouri. Enbridge shuts down the 193,000 barrels per day Spearhead (Line 55) pipeline after a spill in Northern Missouri. Enbridge also shut down the parallel Flanagan South (Line 59) pipeline.





As you view the next few slides, **please ask why you may want to make your voice heard in the approval process for the next new pipeline in Illinois.**

Think about your desired level of participation.

Level 1: Quick and easy

Level 2: Slightly more involved

Level 3: All In





These slides will be
available at
ForestCity350.org





Who is SOIL?

- Save Our Illinois Land
- All Volunteers
- Members are from a wide variety of other organizations
- We believe in being prepared.
- We believe ordinary citizens should have a voice in the approval process for new pipelines.
- We believe landowners deserve fair treatment.
- We are concerned about safety and protection of land, water and air.
- We have found that Illinoisans dislike a private foreign corporation using eminent domain to gain land rights from Illinois citizens for pipelines, especially when the pipeline is used, at least in part, for export.
- More about us in the brochure



Canada and US Tar Sands Export Plans

- ▶ “[O]ur government is committed to ensuring that Canada has the infrastructure necessary to move our energy resources to [world] markets.” - [Former Prime Minister Stephen Harper in a 2012 speech in China - cbc.ca](#)
- ▶ “[I]t is essential that we be able to export American energy to our allies...” - [U.S. Senator John Barrasso on Senate floor January 27, 2016 - Barrasso website](#)





Who is Enbridge?

- Enbridge Headquarters Calgary, Alberta [Source](#)
- 17,511 miles of liquids pipelines [Source](#)
- Acquires Spectra Energy [Source](#)
- 9,423,708 gallons in 1276 major spills 1996-2014 [Source](#)
- Kalamazoo: Largest inland spill in US history [source](#)
- Romeoville: 256,000 gallons in storm system [Source](#)
- Buys 27.6 % of Bakken Pipeline System [Source](#)



Where Is the Dakota Access Pipeline (DAPL)

- Question: Where does DAPL end?
- Enbridge buys 27.6 % of DAPL and ETCOP [Source](#)
- New Name: Bakken Pipeline
- “Offers customers competitive tolls between the Bakken and USGC” [Source](#)
- Longstanding Ban on Crude Oil Export Lifted [source](#)

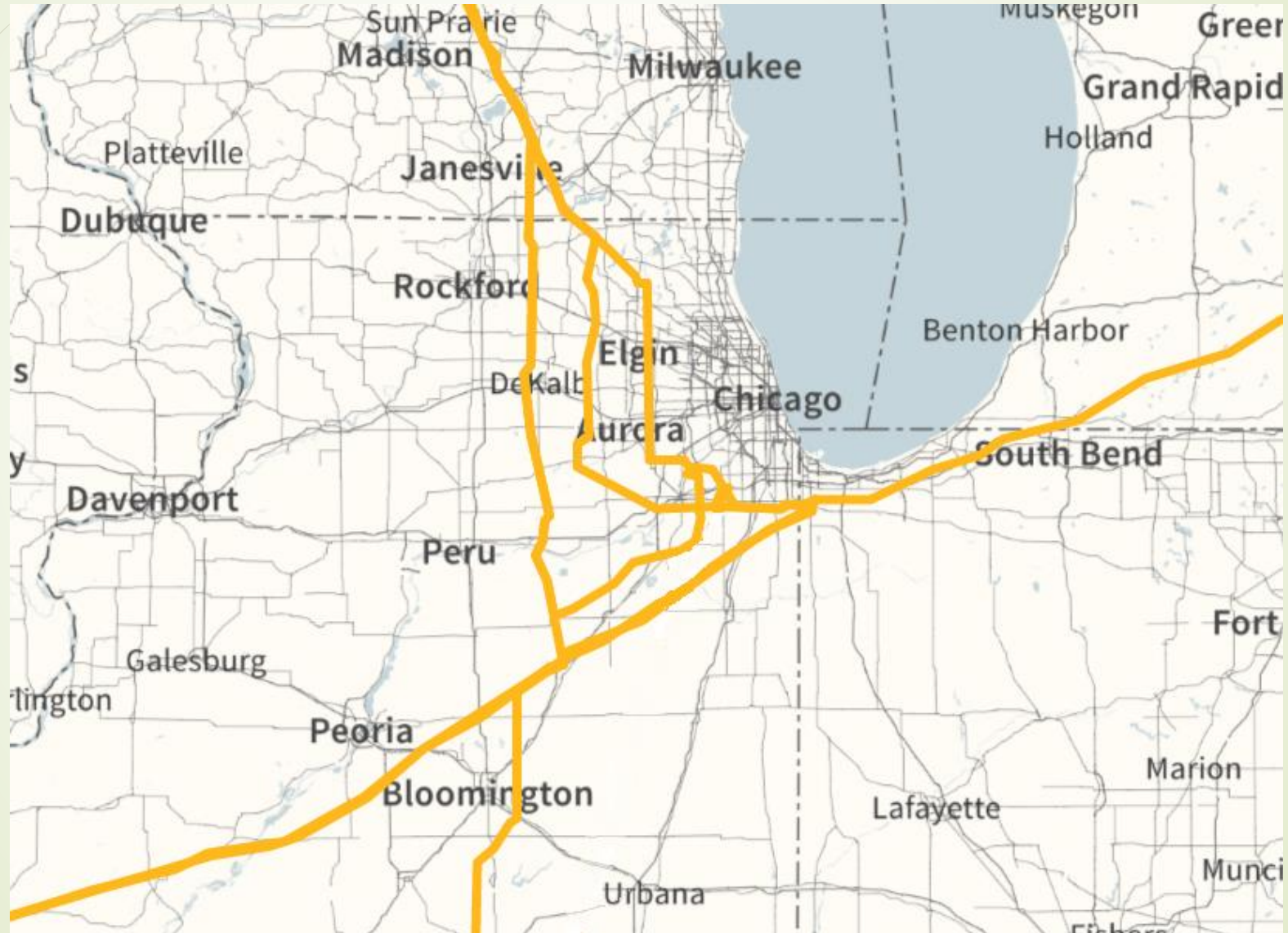




The
Larger
Enbridge
Picture



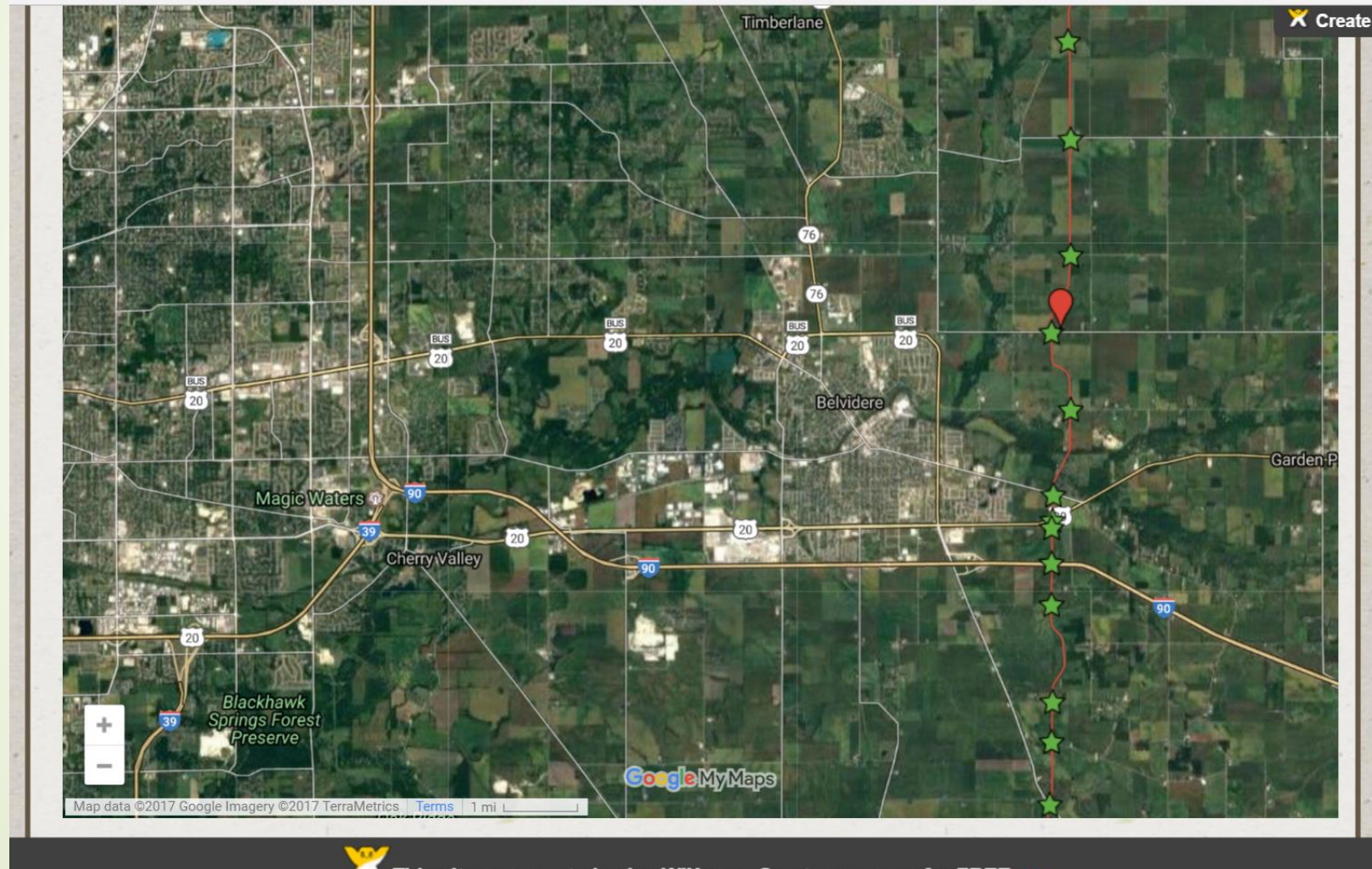
Enbridge Pipelines in Our Area




Enbridge Pipeline in our Back Yard

See the interactive map at forestcity350.org > Get Involved > Line 61 Pipeline Map

www.forestcity350.org/line-61-map





Fair Treatment of Landowners Easement Agreement


- Perpetual Agreement – Why not a lease
- Abandon in Place
- Bury at sufficient depth at the time of construction
- Landowner liable for negligence of agents, representatives, employees, contractors, or invitees
- Enbridge can sell your Right of Way (ROW) to anyone, domestic or foreign



What is in our Enbridge pipelines?

- ▶ Our pipeline, Line 61, contains a cocktail of chemicals (diluent) used to allow the thick tar-like substance (bitumen) to flow through the pipe as 'dilbit'
- ▶ Largest Illinois pipeline through Boone, DeKalb, LaSalle, and Livingston counties
- ▶ At one destination, the diluent is extracted and pumped back north in a pipeline (Line 13) running parallel to Line 61
- ▶ The chemicals in both Line 13 and Line 61 include:
Benzene, cyclohexane, cyclopentane, i-pentane, methylcyclohexane, methylcyclopentane, n-butane, n-heptane, n-hexane, n-pentane, **toluene**, hydrogen sulfide, ethylbenzene, and xylenes





If you suspect a pipeline leak has occurred...

Source: [Pipeline Safety Trust](#)



DO NOT!

- Touch, breathe or make contact with leaking liquids;
- Start an engine of any kind;
- Strike matches or create a flame of any kind;
- Use a telephone or cell phone (these can ignite airborne gases);
- Turn on or off any electrical switches (these also can ignite airborne gases);
- Drive into a leak or vapor cloud area.

The Pipeline Approval Process - Start

- The private pipeline company files a request for **Certificate in Good Standing** and **authority to seize private property using eminent domain** to the Illinois Commerce Commission (ICC)
[220 ILCS 5/15-401](#)
- Must show that it made 'reasonable attempts' to negotiate with landowners. [SAX Final Order p11](#)
- Must also show that, among other things, it is financially able to complete the project [220 ILCS 5/15-401](#)
- Must show that there is a **public need** for pipeline and that **public convenience and necessity** requires pipeline. [id](#)



Your Participation – Level 1: e-Docket

- Business Name - Can be blank
- Business Address – Your address
- Business e-Mail – Your email address
- Challenge Question – e.g. Mother's maiden name
- Primary Business Purpose – Can be blank
- Preferred User Name – Your Choice
- Notarize Signature and Mail
- Email SaveOurIllinoisLand@gmail.com when confirmed



Your Participation – Level 2

- Submit a Petition to Intervene
- SOIL provides a template
- If you plan to continue, explain how the pipeline would affect you (i.e. establish standing).
 - ICC has set a low bar for standing by allowing *60 Plus Association, Inc.* to intervene, without challenge, because ‘supporters’ purchase energy.
 - To avoid complicated challenges to your intervention it is wise to choose a single, well-researched issue, one that fellow intervenors are not using. SOIL has a mechanism to help you with this.
 - SOIL has growing issue list – you can choose or add to the list





Your Participation – Level 3

- Process varies - set by the Administrative Law Judge
- SOIL prompts you and provides templates if you choose to proceed
- Testimony submitted through e-Docket
- Hearings simultaneous: Springfield, Chicago, by phone
- Build a strong case for your issue
 - Evidence worthy documents
 - Expert witnesses
 - SOIL has list – help us build it





Please join us in this exercise in democracy

- ▶ You choose your Level of participation
 - ▶ Level 1: e-Docket sign up
 - ▶ Level 2: Petition to intervene
 - ▶ Level 3: Continue to make your case
- ▶ But please remember, any level of participation you choose will help.





How will SOIL will help you.

- Confirm you have an e-Docket account.
- Add you to the SOIL_ICC_Intervenors group to give you access to our intervenor data, topic list, evidence sources and templates
- Notify you when the next pipeline project approval project begins
- Provide assistance throughout the intervention process

